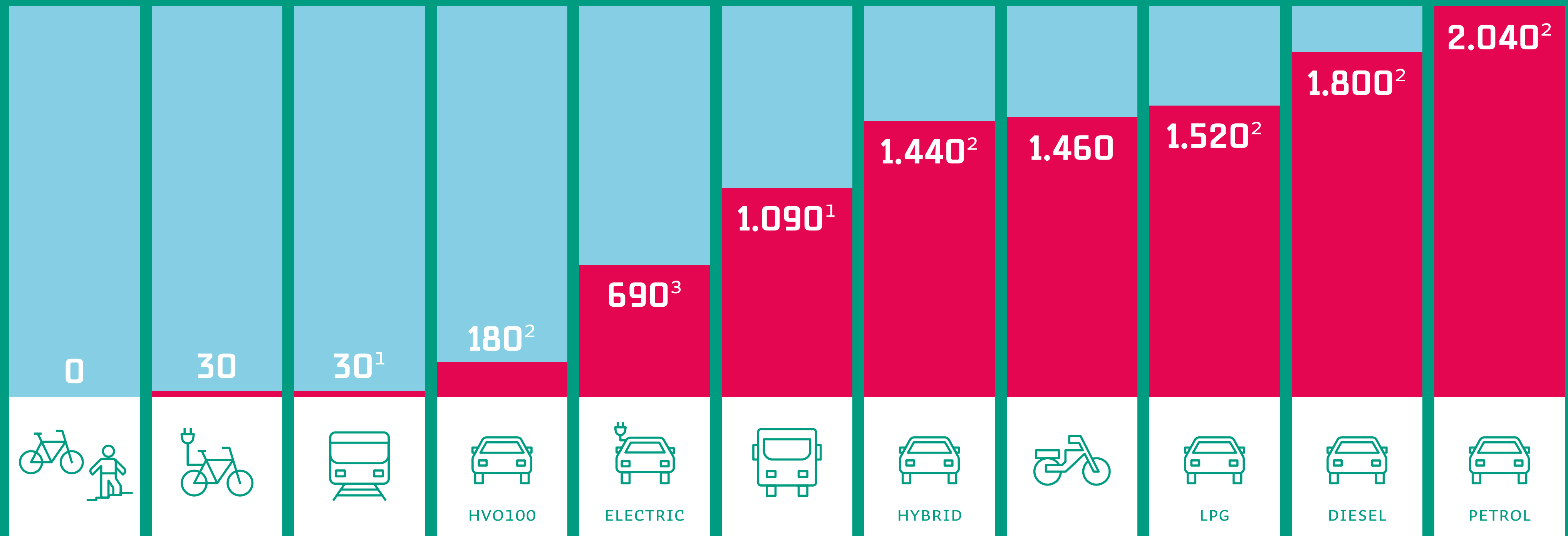
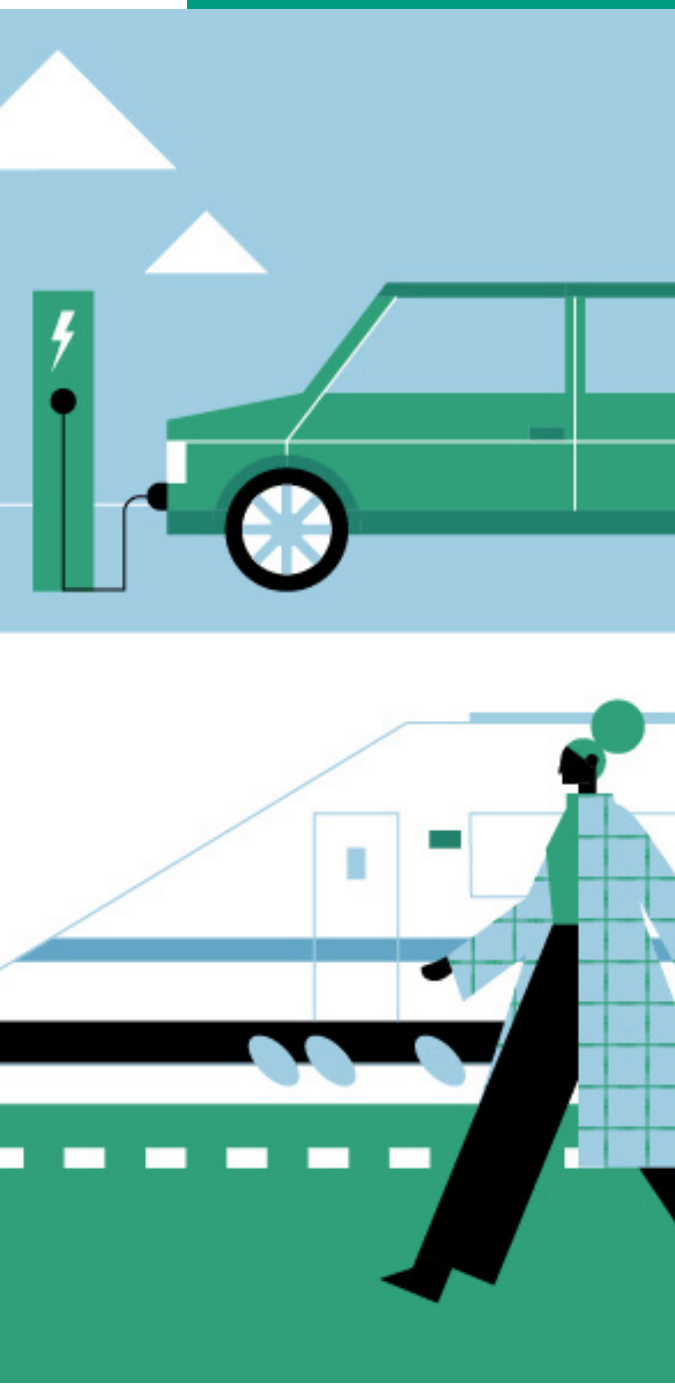




I think green and travel green: Saxion encourages sustainable choices in transport

Are you a green commuter?



→ Numbers shown are grammes of CO₂ per km

Source: February 2023 emission factors taken from [List of emission factors | CO₂ emission factors \(NL\)](#).

- 1 Public transport is usually a more sustainable choice because you always travel with more people at the same time. The emissions per person are therefore a lot less than with a petrol or diesel car.
- 2 Based on a medium-sized vehicle.
- 3 Power mix (green and grey).